



Separate toxic

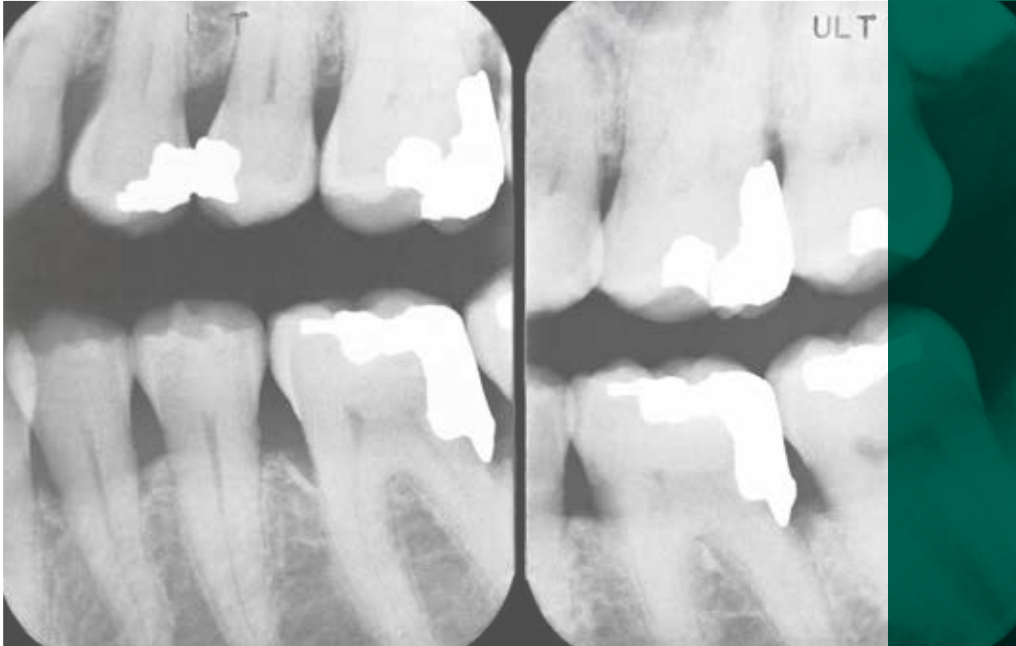
DENTAL AMALGAM



before it goes down the drain

Dental amalgam contains elemental metals like mercury, silver, tin, and copper. If these materials get into the sewer system, they can damage the City's Wastewater Treatment Plant and harm the environment. That is why it is critical that these materials are properly collected and prevented from going down the drain.

The Dental Disciplines Act—Bylaws (2010) requires members of the College of Dental Surgeons of Saskatchewan to have a functioning International Standards Organization (ISO) approved amalgam separator installed.



How to keep dental amalgam out of the sewer system:

- A dental amalgam separator is the best way to capture amalgam and prevent it from entering the sewer system. Separators remove solid amalgam and allow clean wastewater to go down the drain. The captured amalgam can then be either recycled or disposed of properly.
- Use an ISO Standard amalgam separator (ISO 11143:2008—Dentistry—Amalgam Separators)

Clean and maintain your amalgam separator:

- Amalgam separators must be installed and maintained in accordance with manufacturer’s instructions and specifications, and should be replaced a minimum of once per year.
- Proper maintenance of these fixtures is essential to ensure that they function as they should.
- Keep an inspection and maintenance record for the amalgam separator and keep it on file for a minimum of two (2) years as proof of cleaning. The City’s Dental Amalgam Separator Maintenance Record form is available on the City’s website, Saskatoon.ca.



- Keep amalgam out of sinks that are not connected to an amalgam separator and never rinse amalgam waste down the drain.
- Clean or replace chair-side traps on a regular schedule and properly dispose of amalgam waste.
- Clean vacuum pump filters regularly, according to the manufacturer’s recommendations.

Questions about your amalgam separator?

Visit Saskatoon.ca/sewer, email bylaw.compliance@saskatoon.ca or call **306-657-8766**

